



User Manual

T5 LED Powermodule WiFi

Table of contents

1.	Introduction	3
2.	General information	3
2.1.	Intended use	3
2.2.	Scope of delivery	3
2.3.	Safety instructions	4
3.	Starting up the fixture	4
3.1.	Electrical connection	4
3.2.	Mounting the fixture	5
3.3.	Mounting or replacing the T5 bulbs	5
4.	Establish connection with the terminal device	6
4.1.	Connecting via W-Lan/radio network	6
4.2.	Connecting via Ethernet cable (alternative to W-Lan/radio network)	7
5.	Programming via the Lightstudio	8
5.1.	Function of the tab „Chart“	8
5.1.1.	"Save"	8
5.1.2.	"File"	9
5.1.2.1.	Saving the created program on a computer	9
5.1.2.2.	Loading a stored program for editing	9
5.1.3.	"Reload"	10
5.1.4.	"Raster"	10
5.1.5.	"Apply to all"	10
5.1.6.	"Nodes" add, remove or assign color	11
5.1.6.1.	"Color"	11
5.1.6.2.	"◀+" " - " " ▶"	11
5.1.7.	"Preview" start, pause or stop	12
5.1.8.	Switching on/off the graphs of the T5 bulbs and LED spot channels	12
5.2.	Functions of the tab "Colors"	12
5.2.1.	The preview function	13
5.2.2.	Creating a new color	13
5.2.3.	Deleting a created color	15
5.3.	Functions of the tab "Lamps"	15
5.4.	Functions of the tab "Settings"	15
5.4.1.	Adjusting the power of the cooling fans of the T5 tubes	15
5.4.2.	How to Update Firmware	16

5.4.3. Starting the Demo Program	16
5.5. Functions of the tab "Language"	16

1. Introduction

Dear customer, with the purchase of this fixture you have chosen an ATI - quality product, thank you for your confidence.

2. General information

2.1. Intended use

Our fixtures are exclusively designed to illuminate aquariums. The fixtures must be permanently installed with the specified minimum distance of 20 cm from the water surface above the aquarium. The fixture may not come into contact with water, this must be guaranteed. Furthermore, children must be prevented from coming into contact with the equipment. Never allow children to approach the aquarium lighting unattended.

2.2. Scope of delivery

After unpacking your fixture, please check that it is in perfect condition and the scope of delivery. If you notice any damage or incompleteness in the scope of delivery, it must be reported to your dealer immediately in order to assert any warranty claims. Damaged fixtures or components may not be put into operation under any circumstances!

- LED T5 Hybrid fixture
- LED power supply
- Power supply cord
- Pendant set
- WiFi Antenna



Our fixtures are CE marked. This can usually be found on the identification label.

2.3. Safety instructions

Please note the following information during operation:

The lamp should never be operated without a splash guard.

Active ventilation has to be ensured.

The fixtures are intended exclusively for aquarium use. They may never be operated under water.

During maintenance work and when replacing the lamps, the fixture must be dismantled and completely disconnected from the electrical supply.

Allow the illuminants to cool sufficiently before replacing them.

When working in the aquarium, it is advisable to disconnect the lighting from the mains for safety reasons.

The fan covers shall never be covered with objects.

If errors occur, please do not attempt to repair the unit yourself. Contact your dealer or call our service hotline 02381-8710120.

The T5 LED hybrid light is designed for the operation of open aquariums indoors. Do not operate in closed covers or within other enclosures.

The fixtures must be installed at a minimum distance of 20 cm from the water surface. It cannot be operated lying on the edge of the aquarium.

3. Starting up the fixture

3.1. Electrical connection

The T5 LED Powermodule is equipped ex works with a cord with earthing contact plug. Please ensure that your power supply at the aquarium complies with the regulations. An earthing contact is mandatory. When purchasing multiple sockets or other connection requirements, please pay attention to the earthing contact.

Important!

First connect the fixture to the external LED power supply before connecting the power supply to the mains.

3.2. Mounting the fixture

For the two suspension brackets, drill two holes in the ceiling at a distance between the ropes. The distances of the individual fixtures are shown in the following table (all dimensions in mm).

Wattage	24W	39W	54W	80W
LED T5 Powermodule	541	841	1141	1441

Mounting aids such as dowels, screws, etc. ... are deliberately not included in the scope of delivery. These must be selected according to the local ceiling conditions.

Consult a specialist dealer for advice on the fasteners to be selected. After the wire suspension has been attached successfully, the fixtures can be suspended using the Y-mounting.

The power supply and the lamp become warm during operation. Ensure that sufficient heat dissipation is guaranteed.

3.3. Mounting or replacing the T5 bulbs

When inserting or replacing T5-bulbs it is recommended that the fixture for mounting and dismantling the bulbs be suspended and replaced when lying down. Then simply remove the splash guard. To do this, pull the acrylic glass pane out of the fixture on the side provided. Now equip the fixtures with the bulbs of your choice. Insert the fluorescent bulbs into the socket and turn them 90° until they lock. All ATI fixtures are equipped with electronic ballasts. This eliminates the need for a starter to ignite the fluorescent bulbs.

The fixture may only be operated fully equipped with bulbs!

When replacing the bulbs, please check the sockets and connection terminals for burns, deposits or other damage and have them replaced if necessary. Also check the

fluorescent bulbs for faults. Under no circumstances should damaged fluorescent bulbs be put into operation!

Please "burn-in" new bulbs. "Burn-in" means that the bulbs are operated at 100% for about 100 hours before they can be dimmed.

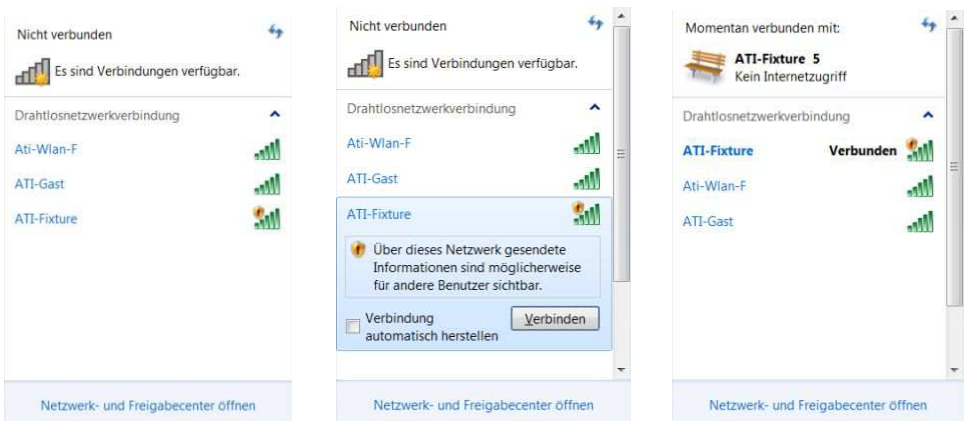
When programming the dimming intervals or sunrise and sunset, please note that longer phases with a low current consumption (0-25%) can shorten the lifespan of the bulbs and may cause errors.

4. Establish connection with the terminal

4.1. Connecting via W-Lan/radio network

Screw the antenna to the connector of the power supply unit.

Connect to the W-Lan hotspot "ATI-Fixture" of the Powermodule.



Use your preferred Internet browser and enter the IP address of the fixture (192.168.1.1).

Sign in.

The user ID for the factory setting is "admin" and the corresponding password is also "admin".

The "Light Studio" program opens in your browser with the factory settings of your fixture.



The image shows a login form titled "Anmelden". It features two input fields: the first contains the text "admin" and the second contains ".....". Below the fields is a blue button labeled "Anmelden".

The system time of your PC or platform-independent terminal device is also transferred to the fixture.

4.2. Connecting via Ethernet cable (alternative to W-Lan/radio network)

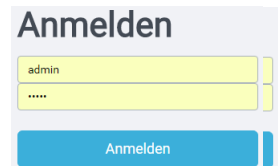
Connect the power supply unit to your PC or platform-independent end device using a commercially available Ethernet cable (not included in the scope of delivery).

Use your preferred Internet browser and enter the IP address of the fixture (192.168.1.1).

Sign in.

The user ID for the factory setting is "admin" and the corresponding password is also "admin".

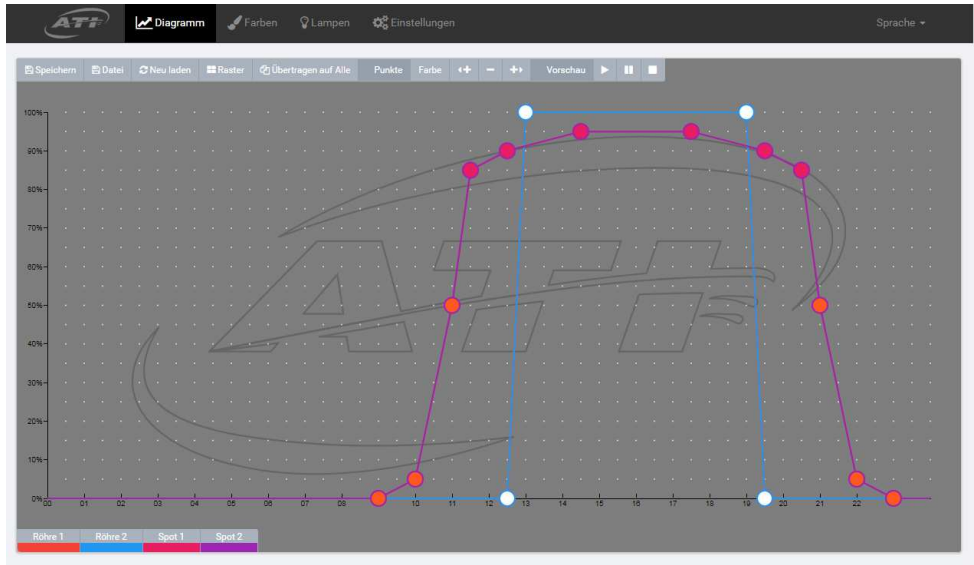
The "Light Studio" program opens in your browser with the factory settings of your fixture.



The image shows a login form titled "Anmelden". It features two input fields: the first contains the text "admin" and the second contains ".....". Below the fields is a blue button labeled "Anmelden".

The system time of your PC or platform-independent terminal device is also transferred to the fixture.

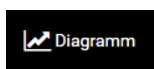
5. Programming via the Lightstudio



The graphical user interface of the Light Studio allows you to conveniently customize the program of your fixture.

For example, a time of day and intensity can be assigned to the individual programming points by drag and drop, or a color can be assigned by mouse click. The special functions are described below.

5.1 Function of the tab "Chart"



The Light Studio starts in "Diagram" mode. If you have already opened another dialog box, such as "Colors", click "Diagram" to return.

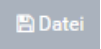
5.1.1. "Save"




By clicking on "Save", you can save the current settings of the program you have edited in your hybrid fixture.

To confirm the successful data transfer, a pop-up window appears, which you can close by clicking on "OK".

5.1.2. "File"

 A click on "File" opens a pop-up window. Here you can choose whether you want to save a created program on your computer or upload an already saved program from your computer for editing.


5.1.2.1. Saving the created program on a computer

 Click on "Download". In the newly opened window, select "Save file" if this is not selected. Click on "OK". Your program will now be saved as a file "ati.settings.json" on your computer.

Please note:

The saving location is determined by your settings in the Internet browser (e. g. in the "Downloads" folder).

5.1.2.2. Loading a stored program for editing

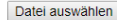
 Click "Browse". In the newly opened window, select the directory in which the saved program is located. Select the JSON file you want to edit by clicking on it. Then click "Open". The selected file will now appear next to "Browse". After you have clicked on "Upload", a window appears for confirmation, which you can close by clicking on "OK".

Datei - Speichern und Laden

Mittels 'Herunterladen' können Sie die aktuellen Farb- und Tagesverlauf-Einstellungen lokal auf Ihrem Gerät sichern.



Wählen Sie eine zuvor erstellte Datei aus, um Farb- und Tagesverlauf-Einstellungen zu laden. Nutzen Sie im Anschluss die Funktion 'Speichern' im Diagramm, um die Einstellungen in der Lampe zu übernehmen.

 Keine ausgewählt







5.1.3. "Reload"

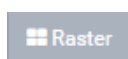


If you want to reset the changes you have made in the program, click on "Reload". This will load the program from the fixture again.

Please note:

Of course, this is only possible as long as you have not selected the "Save" function.

5.1.4. "Raster"



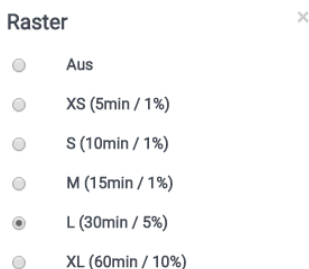
You can enable or disable the Snap-to-Grid feature.

A minute-by-minute setting is only possible in a mode with the grid switched off.

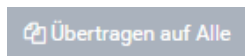
If the function is activated, the selected programming point will automatically snap into the nearest point of the grid during a movement. This enables fast and convenient adjustment.

You can choose one of the five predefined grids. With the roughest grid, programming is only possible in steps of 60 minutes and an intensity of 10%. With the finest grid you can work with steps of 5 minutes and an intensity of 1%. Select the grid with which you can best create the desired program.

Click on "Grid". Select one of the displayed grids or select "Off" to disable this feature. Close the window.



5.1.5. "Apply to all"



The "Apply to All" function allows you to conveniently transfer settings you have made on one T5 channel or LED spot to the other T5 channel or other LED spots.



To do this, click "Apply to All" and then click the arrow. First select the channel/spot whose programming you want to transmit, e. g. "Spot 1". Then select the spot (s) to which you want to transfer the programming, e. g. "Spot 2". Confirm by clicking "Apply".

Einstellungen Übernehmen

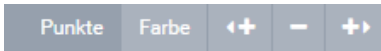
Einstellungen von Spot 1 auf folgende Übernehmen:

- Spot 1
- Spot 2

Abbrechen

Übernehmen

5.1.6 "Nodes" add, remove or assign color



5.1.6.1. "Color"

With the "Color" function you can assign new colors to the programming points of the LED spots.

Clicking on "Color" opens a bar with the pre-programmed and your created LED colors.



Click on a programming point of an LED spot and then click on a color, e. g. "Full Spectrum". The edited point is now displayed in orange.

Please note:

The visual representation of the colours in the diagram is arbitrary or determined by you. They are only used for easy differentiation in programming and do not provide any information about the set colours of the LED spots.

5.1.6.2. "<+" "-" "+>"

You can add or delete programming points in the graphs.

Click on a point that you want to delete or create a new programming point next to it. Then click on "<+", "-" or "+>". Depending on whether you want to remove the point or insert a new point to the right or left of the selected point.

Please note:

If there is already another point below or above the marked point on the same time axis or at the same time, the newly created point may not be visible immediately if the wrong insertion direction has been selected. It would only become visible after moving the previously marked point, as it is hidden by it.

5.1.7 "Preview" start, pause or stop

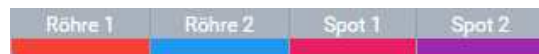


With the function "Preview" you have the possibility to view the color settings of the program you have edited in

time lapse in your aquarium.

Start the day with the "▶" key. Click on "⏸" to pause the preview and stop the function with the Stop key "■".

5.1.8. Switching on/off the graphs of the T5 bulbs and LED spot channels



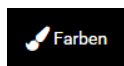
Depending on the version of your hybrid fixture, the two T5 channels (Tube 1 and Tube 2) and the LED channels (Spot 1, Spot 2, Spot 3 and Spot 4) are displayed in the bar.

A click on a button on this bar switches the graph of the respective channel off or on again.

This function makes it easy to program a channel without the graphs of other channels interfering with the processing.

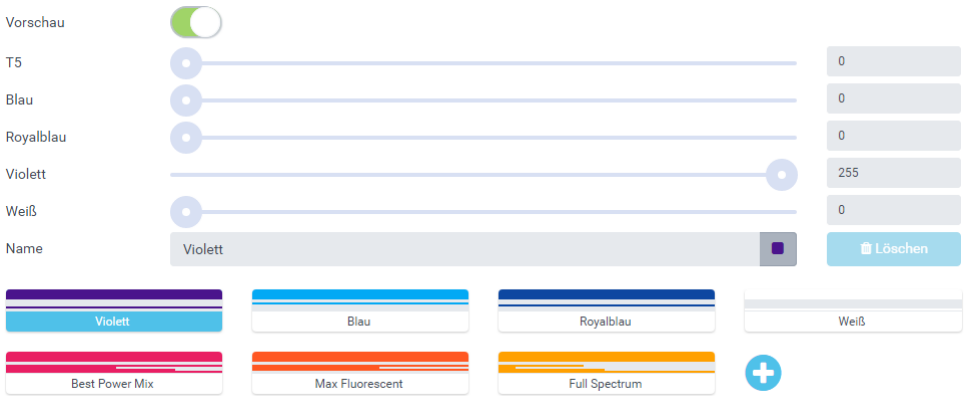
If desired, you can now transfer this programming to other channels as described under 3.5.1.5.

5.2. Functions of the tab "Colors"



Clicking on "Colors" opens the window in which you can edit the colors of the LED spots, activate the preview function and define the color representation of the programmed color in the diagram.

5.2.1. The preview function



With the preview disabled, click in the white box to the right of the circle. The circle moves to the right and the left field turns green. The preview function is now activated.

You can compose your own colour and view it at the same time in your aquarium.

To end the function, click on the green field to the left of the circle.

5.2.2. Creating a new color

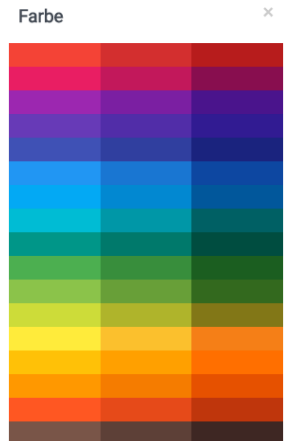
The preset colors: " Violet", "Blue", " Royal Blue", "White", "Best Power Mix", "Max Fluorescent" and "Full Spectrum" cannot be changed.


However, it is possible to change the color of the graphic representation of these colors in the diagram.



Click on the grey square to the right of the color name.

A color palette appears from which you can choose any color. After selection, the small square is displayed in this color. When you switch to the diagram, the programming points of the relevant LED color are now displayed in the selected color.



 Click on "+" to add another color.

A new button with the name "New" appears.

Vorschau

T5

Blau

Royalblau

Violett

Weiß

Name

Violett Blau Royalblau Weiß

Best Power Mix Max Fluorescent Full Spectrum Neu

+

Click on "New" to edit the color. Click in the text box to edit the name and the adjacent grey square to assign a display color (see above).

The color values can be set with the sliders using drag and drop. It is also possible to enter numerical values directly in the fields (0 - 255).

Please note:

A color must have the value 255, because you only specify the percentage ratio of the individual colors to each other. The intensity of the LED color you create is determined later in the diagram via the (vertical) position of the programming point.

If the preview function is activated, you can also switch on the T5 tubes using the slider. This makes it possible to evaluate the new color in the overall impression with the T5 tubes.

5.2.3. Deleting a created color



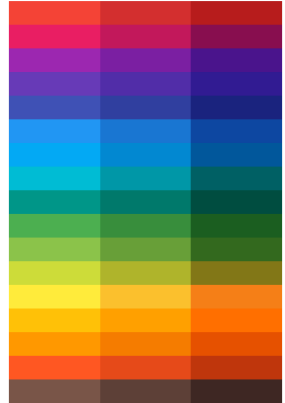
Select a color you have created and click on "Delete". Select "Yes" to confirm. The color is now erased.

5.3. Functions of the tab "Lamps"



It is possible to change the color of the graphs (lines) of the individual channels in the diagram.

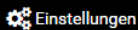
Farbe



Click on the grey square to the right of the channel.

A color palette appears from which you can choose any color. After selection, the small square is displayed in this color. When you switch to the diagram, the lines of the relevant channel are now displayed in the selected color.

5.4. Functions of the tab "Settings"



5.4.1. Adjusting the power of the cooling fans of the T5 tubes



The performance of the cooling fans of the T5 tubes can be adjusted in six stages. The factory default setting is a fixture with two T5 fans at stage 5 and a fixture with four T5 fans at stage 7. This setting corresponds to the required cooling capacity at normal room temperature.

At higher ambient temperatures, e.g. warm summer days, open fireplace,... a stronger cooling can be advantageous. To do this, click on a point to the right of the currently selected level. The new power level is now highlighted in blue. After clicking on "Sync", this setting is transferred to the control of your fixture.

5.4.2. How to Update Firmware

Aktuelle Version 1.0.11 (2017-09-27)
Firmware-Update Keine ausgewählt

Please note:

Updating with an unsuitable firmware can damage the fixture and cause it to lose its function.

If necessary, contact ATI for appropriate firmware or installation assistance.

5.4.3. Starting the Demo Program

Demo-Programm

Click in the white field to the right of the circle when the demo mode is deactivated. The circle moves to the right and the left field turns green. The demo program is now activated.



It enables a hardware test of the fixture. The different colour channels of the LED spots, the individual spots and then the T5 tubes are dimmed up or down one after the other.

To exit the function, click on the green field to the left of the circle.

5.5. Functions of the tab "Language"

Sprache ▾

Click on "Language" and then select whether the display should be in "German" or "English".

English
Deutsch